

Time : 3 hrs.

M.M. : 80

General Instructions :

- (i) All questions are compulsory.
- (ii) Read all questions very carefully.
- (iii) Questions 1 to 10 carry 1 mark each.
- (iv) Questions 11 to 18 carry 2 marks each.
- (v) Questions 19 to 28 carry 3 marks each.
- (vi) Questions 29 to 34 carry 4 marks each.

- Q1. Find the area of the rhombus whose diagonals are 72cm and 40cm.
- Q2. Identify the terms of the expression $6x - 7y$.
- Q3. Express 0.00035 in standard form.
- Q4. Where will a point lie whose x-coordinate is zero?
- Q5. What happens to the volume of a cube if its edge is doubled?
- Q6. Find the common factors of $64xy^2$, $24xy$, $32x^2y$.
- Q7. Identify the proportion as Direct/Inverse in the given statement :
'The number of labourers and the time to complete a given work.'
- Q8. An item marked at ₹840 is sold for ₹714. What is the discount percent?
- Q9. Express 2.7149×10^5 in usual form.
- Q10. On which axis will the point (5, 0) lie?
- Q11. 28% of the total number of students were present on Monday. If the total number of students in the school is 1050, how many students were absent on Monday?
- Q12. A loaded truck travels 28km in 30 minutes. If the speed remains the same, how far can it travel in 6 hours?
- Q13. Find and correct the error :

$$\frac{2x+5}{2x} = 5$$

(I)

Q14. Find 'n' so that

$$\left(\frac{2}{3}\right)^{-2} \times \left(\frac{2}{3}\right)^{-9} = \left(\frac{2}{3}\right)^{2n+1}$$

Q15. Construct a square with side 5.5cm. (No steps of construction)

Q16. Subtract $3a^2b + 7ab - b^2$ from $-4a^2b - 8b^2$.

Q17. The area of a trapezium shaped field is 480 m^2 , the distance between two parallel sides is 16m and one of the parallel side is 20m. Find the other parallel side.

Q18. In an old age home, there are 100 residents and the food for them can last for 20 days. If 25 more residents come to stay there, how many days will the food last?

Q19. Using identities, evaluate :

(a) $(983)^2 - (17)^2$

(b) $(998)^2$

Q20. A road roller is 350cm long and its diameter is 84cm. It takes 500 complete revolutions to level the road. Find the area covered by it.

Q21. Factorise : $p^4 - 81$.

Q22. Construct a rhombus ABCD whose diagonals AC and BD are 7cm and 5cm respectively. (No steps of construction)

Q23. How many cubes of side 15cm can be fitted into a box which measures $150\text{cm} \times 90\text{cm} \times 75\text{cm}$?

Q24. Simplify : $(x + 7)(x^3 - 7) + 49$ and find its value for $x = 2$.

Q25. Four persons could fit new windows in a house in 3 days.

(a) One of the persons fell ill before the work started. How long would the job take now?

(b) How many persons would be needed to fit the windows in one day?

Q26. Factorise and divide :

$$z(5z^2 - 80) \text{ by } 5z(z+4)$$

Q27. The price of an article is ₹12,000 and sales tax charged on it is 12%. Find the cost of the article when a customer buys it.

Q28. Show that :

$$\left(\frac{9}{2}p - \frac{5}{2}q\right)^2 + 45pq = \left(\frac{9}{2}p + \frac{5}{2}q\right)^2$$

Q29. Draw a linear graph to show the following data :

Weight of rice (in kg)	10	15	20	25
Cost (in ₹)	500	750	1000	1250

Use the graph to find the cost of 30 kg rice.

Q30. Sonia invested ₹5,000 in a business. She would be paid interest at 8%, per annum compounded annually. Find

- (a) The amount credited against her name at the end of the second year.
- (b) The interest for the third year.

Q31. Reema is painting the walls and ceiling of a cuboidal room with length, breadth and height of 12m, 8m and 5m respectively. If each can of paint covers 8sq.m of area, how many cans of paint shall be required to paint the room?

Q32. Factorise :

- (a) $x^2 - 4x - 21$
- (b) $15xy + 15 + 9y + 25x$

Q33. Simplify :

- (a) $\left[\left(\frac{1}{8}\right)^5 \div \left(\frac{1}{8}\right)^3\right] \times \left(\frac{1}{8}\right)^0$
- (b) $\left(\frac{3}{4}\right)^{-6} \times \left(\frac{4}{3}\right)^{-4}$

Q34. Construct a quadrilateral TRUE in which TR = 5.5cm, RU = 6cm, UE = 4cm, $\angle R = 75^\circ$ and $\angle U = 100^\circ$. Also write the steps of construction.

SUBJECT : COMPUTER SCIENCE**Time : 2 Hrs.****M.M.: 50**

Q1. Choose the correct answer and write it in the answer sheet:
(6x1=6)

- (i) Term used to denote different categories within MS-Access table -
 - (a) Fields (b) Data
 - (c) Records (d) Database
- (ii) Buying and Selling of goods and services online
 - (a) E-mail (b) E-Banking
 - (c) E-Commerce (d) Chatting
- (iii) It is also known as 'Vertical axis' in a chart in MS-Excel
 - (a) M axis (b) X axis
 - (c) Y axis (d) D axis
- (iv) Field size of 'Yes/No' field in MS-Access table
 - (a) 8 Bytes (b) 4 Bytes
 - (c) 2 Bytes (d) 1 Byte
- (v) An example of mixed cell reference
 - (a) \$J\$10 (b) \$\$J10
 - (c) J\$10 (d) J10
- (vi) An example of a search engine on internet
 - (a) Internet Explorer (b) Firefox
 - (c) Google (d) Virus

Q2. Give one word answer for the following statements: (8x1=8)

- (i) Online services which store information about people.
- (ii) Absolute cell address of 50th cell in AB column.
- (iii) Maximum number of characters that can be given in a MEMO field in MS-Access table.
- (iv) An example of Freeware software.
- (v) Name given to one file to MS-Excel.

- (vi) Button which represents data sorting in ascending order.
 - (vii) Collection of related fields in an MS-Access table.
 - (viii) Extension of files saved in MS-Access.
- Q3. Write any three advantages of database systems. (3)
- Q4. What are charts? Name any two types of charts available in MS-Excel. (3)
- Q5. Answer the following questions : (5x3=15)
- (i) Define the term 'Newsgroups'.
 - (ii) Explain three ways of creating tables in MS-Access.
 - (iii) Explain the term 'Cracker'.
 - (iv) Write any three etiquettes which should be followed while writing E-mails.
 - (v) What do you understand by the term 'Tables' in MS-Access?
- Q6. Give validation rules for the following conditions in an MS-Access table : (4)
- (i) 'Fee Amount' cannot be zero.
 - (ii) 'Date of Admission' should be of year 2013 only.
 - (iii) 'Percentage' should be between 80 and 100.
 - (iv) 'Section' should either be 'A', 'B', 'C', 'D' or 'E'.
- Q7. Explain the following : (3x2=6)
- (a) Filtering Software
 - (b) Internet Telephony
 - (c) Relative Cell Reference with example
- Q8. Explain the following components of a chart in MS-Excel -
- (a) Legend
 - (b) Plot Area (3x1=3)
 - (c) X-axis
- Q9. (i) The manager of 'Technoware Systems' wants to graphically analyse the salaries of employees in his company. Which feature of MS-Excel will help him to do so? (1)
- (ii) Cell F2 contains a formula $=\$D\$2 + E2$. Mona has copied this formula to cell F3. Write the new formula which appears in cell F3. (1)

Time : 2½ Hrs.

M.M.: 80

General Instructions :

- (i) This paper consists of three sections A, B and C.
- (ii) Marks are indicated against each question.
- (iii) Draw neat and well labelled diagrams wherever required.

PART-A (PHYSICS)

Q1. Answer in one word or one sentence : (1x5=5)

- (a) The lens in the eye forms real image on the retina. Identify the type of lens.
- (b) Moon is a non-luminous object but still it shines very brightly in the night sky. Give reason.
- (c) Expand the term INSAT.
- (d) Why are chickens not able to see clearly in dimlight?
- (e) Which unit is used to express the distances between celestial bodies?

Q2. Answer briefly : (2x4=8)

- (a) A comet appears after nearly every 76 years. It was last seen in 1986. In which year will it be visible again? Also name the comet.
- (b) How is a star different from a shooting star?
- (c) A child staying in a coastal region tests drinking water and also sea water with his tester. He finds that the compass needle deflects more in the case of sea water. Give reason.
- (d) In the Science Work Experience Class, Rohan's teacher demonstrated the working of a magical toy - 'over and over' as shown in the figure below.



The teacher twisted the thread and made the card twirl rapidly.

- What did Rohan observe when the card twirled?
- For what fraction of a second does the image last on the retina?

Q3. Answer the following :

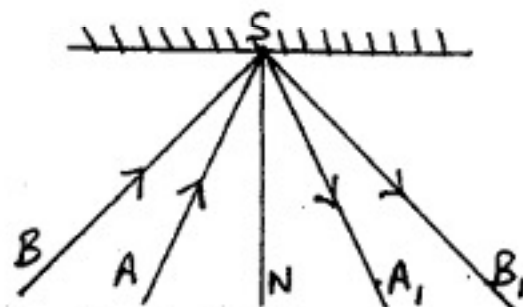
(3x3=9)

- (a) Look at the given figure and answer the following questions :

- What are such group of stars called?
- Why is it also called Hunter?
- How can it be used to locate Sirius star?



- (b) Draw a tester circuit to test the conductivity of lemon juice, oil, honey and soap solution. What do you observe? Justify it.
- (c) Observe the figure given below and answer the questions that follow :



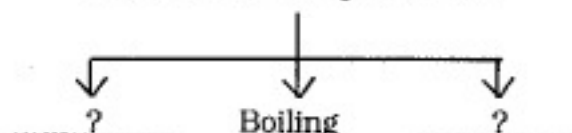
- (i) Name the type of reflection shown in the figure.

- (ii) What is angle of reflection, if AS is the incident ray?
- (iii) If we keep an object in front of this mirror, will the image formed be upright or inverted?
- Q4. (a) Draw a well labelled diagram to show the electroplating of copper on a steel spoon. (2)
- (b) Why is it preferred to store food items in tin cans? (2)
- (c) Iron gets corroded very quickly but still it is used in making bridges to provide strength. Name the metal by which it is coated to protect it from corrosion. (1)

PART-B (CHEMISTRY)

Q1. Answer in one word or one sentence : (1x5=5)

- (a) On a cold winter night, the persons sleeping in a room with closed door and windows with a coal fire burning inside may die due to excessive accumulation of a gas. Name the gas. Why is it fatal?
- (b) In India 50% to 60% of the population suffers from diseases caused by polluted water. Give two examples of water borne diseases.
- (c) Petroleum is the lifeline of present civilisation and is referred to as 'Black Gold'. Justify the statement.
- (d) Methods of water purification



- (e) Complete the analogy :
 Bitumen : _____ :: _____ : solvent for drycleaning

Q2. Answer briefly : (2x4=8)

- (a) Given below are various activities for which fuels are used. Name the fuel consumed in each case
- (i) cooking in villages

(ii) reaching school by bus

(iii) ironing of clothes

Arrange the fuels used for the above activities in order of their increasing fuel efficiency.

(b) Give reason for the following :

(i) Carbondioxide in air is essential as plants use it to make food (photosynthesis) but its excess makes it an air pollutant.

(ii) The use of CNG (Compressed Natural Gas) instead of diesel is being encouraged these days in vehicles.

(c) 'Ganga Action Plan' was an ambitious plan launched by the government to reduce pollution levels in the river but it has not achieved the required success. State four major factors responsible for high pollution levels in the river.

(d) (i) A candle was lit and allowed to burn for two minutes. The temperature recorded in the three zones namely - blue zone, dark zone and yellow zone is given in the table. Select the zones I, II and III to which you think these temperatures belong :

Temperature range	Likely zone
800-1000°C	?
50-80°C	?
400-500°C	?



(ii) While performing an experiment to show transfer of heat, Varun placed one end of a wire in zone I and Rohan placed it in zone II. Whose other end of the wire will get heated first? Give reason.

Q3. Answer in detail :

(3x3=9)

- (a) A resource 'A' is a fossil fuel which is extracted from the earth. It is said to be formed from buried large land plants (vegetation) by a slow process 'B'. When 'A' is heated in absence of air it gives three products D, E and F. 'D' is a solid, 'E' is a liquid and 'F' a gas.

- Identify resource 'A' and process 'B'.
- Name D, E, F and state one use of 'D'.

- (b) Complete the table given below :

	Air pollutant	Source	Effect
(i)	Sulphurdioxide	Petroleum refineries	?
(ii)	?	?	damages the ozone layer
(iii)	Particulate Matter	?	?
(iv)	?	Rubber processing industries	causes smog

- (c) The figure given below represents the 'Fire Triangle'.



- Complete the missing conditions in the 'Fire Triangle'.
- Water and Carbondioxide are the commonly used substances to extinguish a fire. Select which one of them will you use to protect the items listed below if they catch fire. Give reason for your choice for any one of the items given below :

- A. Refrigerator B. Wood
C. Oil

Q4. Answer the following :

(5)

- (a) Study the facts given below and answer the questions that follow :

(5)

- (A) Fuel 'X' produces 90 KJ/kg of energy, has an ignition temperature of 80°C and produces carbonmonoxide and sulphurdioxide on burning.
 - (B) Fuel 'Y' produces 85 KJ/kg of energy and has an ignition temperature of 90°C and produces carbondioxide and water on burning.
 - (C) Fuel 'Z' produces 120 KJ/kg of energy, has an ignition temperature of 30°C and produces water on burning .
- (i) Which of these fuels is most ideal? Give reason.
 - (ii) Identify the fuel which will show spontaneous combustion.
 - (iii) Define calorific value of a fuel.
- (b) In an experiment 4 kg of a fuel was completely burnt. The heat energy produced was measured to be 160,000KJ. Calculate the calorific value of the fuel.

PART-C (BIOLOGY)

- Q1. Answer in one word or one sentence : (1x4=4)
- (a) Reproduction is an energy consuming process but it is not essential for the survival of the individual. Why is it important then?
 - (b) I am a dreadful disease of the immune system in humans. One of my modes of transmission is through infected syringes. Who am I?
 - (c) Fill in the missing activities in the given schematic flow chart listing various agricultural practices in a sequential organisation :
Preparation of soil \rightarrow ? \rightarrow adding manures and fertilisers \rightarrow irrigation \rightarrow weeding \rightarrow ? \rightarrow storage.

- (d) Rahul is a boy of sixteen years and goes to the gym for a workout everyday. State two measures other than physical exercise Rahul should take to maintain reproductive health at adolescence.

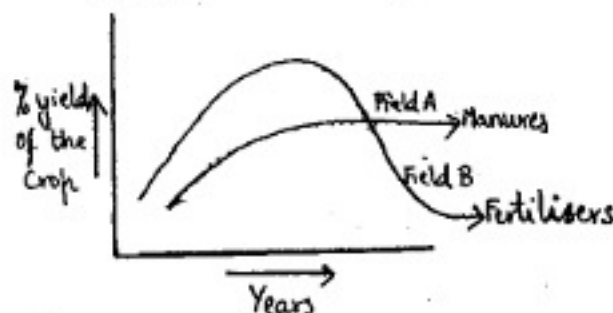
Q2. Answer briefly : (2x4=8)

- (a) Given below are various steps of a process 'A' that takes place during the reproductive phase of life in females :

thickening of uterine wall, release of egg from the ovary, maturation of egg, breakdown of uterine wall

- (i) Arrange the steps given above in correct sequence.
(ii) Identify the process 'A'.
(iii) What is the onset and stoppage of the process 'A' known as?

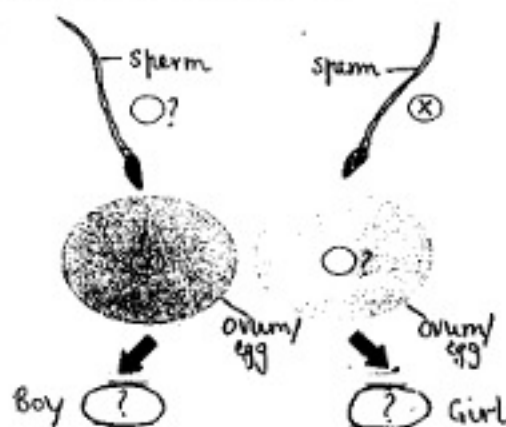
(b)



The given figure shows two crop fields 'A' and 'B' which have been treated with manures and chemical fertilisers respectively. Observe the graph and answer the following questions :

- (i) What is the reason for the different pattern of growth of crops in the two fields over the years?
(ii) State two advantages of manures.
- (c) Given below are different developmental stages in humans :
- embryo, zygote, foetus, adult

- (i) Arrange them in ascending order in terms of cell number.
- (ii) Differentiate between the zygote and foetus (other than their cell number).
- (d) Study the figure given below and in the circles put X or Y to make the schematic representation of sex determination in humans.

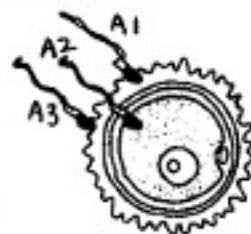


What is the term given to structures named X and Y?

Q3. Answer in detail :

(3x3=9)

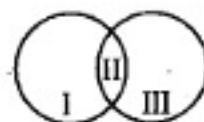
- (a) A unicellular organism 'P' lives in pond water. It has no fixed shape. It moves and catches its food with help of structures 'Q' which keep appearing and disappearing. The organism 'P' reproduces asexually by a process 'R'.
 - (i) Name P, Q and R.
 - (ii) Draw a neat and well labelled diagram of the mode of reproduction of organism 'P'.
- (b) The figure given below represents an important process in the life of humans.



(8)

- (i) Identify and define the process represented in the diagram.
- (ii) Which one of the three - A1, A2 or A3 will be the part of the product obtained after this process?
- (iii) What is the significance of this process in sexual reproduction?
- (c) In the table given below the changes occurring in boys and girls during adolescence are numbered. Write the numbers representing the changes in boys in circle I, changes only in girls in circle III and changes which are common to both boys and girls in the middle section II.

- | |
|--|
| <ol style="list-style-type: none"> 1. Growth spurt 2. Appearance of Adam's Apple 3. Menarche 4. Widening of hips 5. Appearance of body hair 6. Development of mammary glands 7. Appearance of facial hair 8. Broadening of shoulders 9. Appearance of pimples |
|--|



Q4. Answer the following : (5)

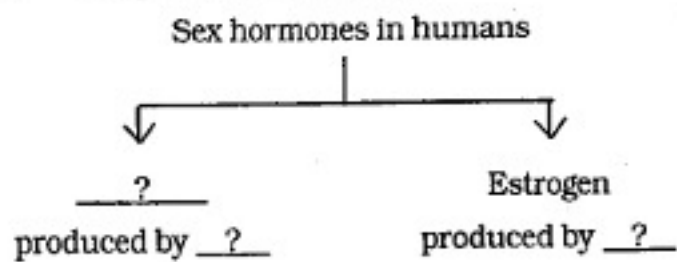
- (a) The diagram given below represents the endocrine system in humans :

- (i) Name the glands A, B, and C in the figure.
- (ii) Gland C secretes a hormone called _____. Improper secretion of this hormone results in a deficiency disease known as _____.



(iii) Mrs Dhir does not use iodised salt in the food she cooks at home. Can this lead to any disorder? Give reason.

(b) Complete the flow chart :



Roll No. _____ Date 11/11/23 Class : VIII Section _____

SUBJECT : SCIENCE (MULTIPLE CHOICE QUESTIONS)

Time : 30 minutes

M.M.: 15

General Instructions :

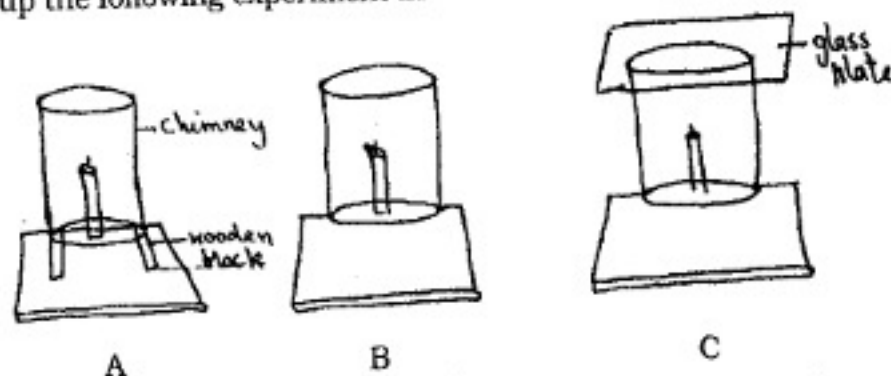
- (i) Attempt all questions.
- (ii) There are 15 multiple choice questions in total. Only one of the options in every question is correct. Put a (✓) against the correct option.
- (iii) Each question carries 1 mark.
- (iv) Do not use white fluid on these sheets.
- (v) Use only pen to mark the answers.

- Q1. How many images of an apple will be formed if it is placed between two parallel mirrors separated by 50 cm?
- (a) 0 (b) many
(c) 1 (d) 3
- Q2. In dispersion of white light by a prism, the coloured light which bends the least is
- (a) yellow (b) green
(c) red (d) violet
- Q3. The addition of common salt to distilled water makes it a _____ of electricity.
- (a) poor conductor (b) electrode
(c) neutral (d) good conductor
- Q4. The presence of _____ on potato can be used to identify the positive terminal of a battery concealed in a box.
- (a) greenish-blue spot (b) pinkish-blue spot
(c) pinkish-green spot (d) reddish-green spot
- Q5. White light is seen through the prism. Which of the following colour is not seen?
- (a) Green (b) Grey
(c) Orange (d) Blue
- Q6. A, B and C are three elements which undergo chemical change according to the following equations :
- $A_2O_3 + B \rightarrow B_2O_3 + A$
 $CSO_4 + B \rightarrow BSO_4 + C$
 $CO + A \rightarrow A_2O_3 + C$
- The correct order of their reactivity is
- (a) $A > B > C$ (b) $B > A > C$
(c) $C > A > B$ (d) $C > B > A$

Q7. When zinc granules are added to dil. hydrochloric acid, hydrogen gas is evolved which _____.

- (a) rekindles a glowing splinter.
- (b) burns with a pop sound when a burning match stick is brought near it.
- (c) turns blue litmus red on dissolving in water.
- (d) turns limewater milky.

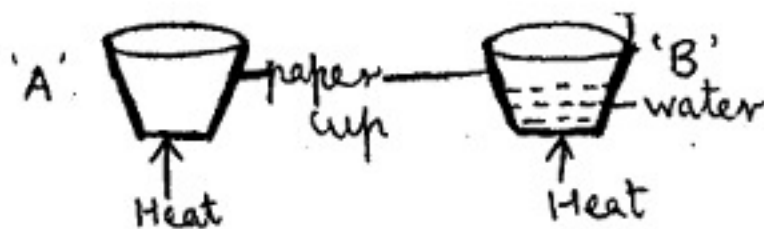
Q8. Nida set up the following experiment in the lab :



She lighted the candles in the set ups A, B and C respectively. The correct order of her observation was :

- (a) A - flame flickers and produces smoke, B - flame gets extinguished, C - candle burns smoothly
- (b) A - candle burns smoothly, B - flame gets extinguished, C - flame flickers and produces smoke
- (c) A - candle burns smoothly, B - flame flickers and produces smoke, C - flame gets extinguished
- (d) A - flame flickers and produces smoke, B - candle burns smoothly, C - flame gets extinguished.

Q9. Samuel set up the following experiment under the guidance of his teacher.



He observed that cup 'A' catches fire easily however cup 'B' does not catch fire. His teacher explained the observation as :

- (a) Paper is an inflammable substance while water is not.
- (b) In cup B the heat is conducted to water so the ignition temperature of the paper is not reached.

- (c) Water has a lower ignition temperature than paper.
- (d) Cup A has more air than cup B which helps in combustion.

Q10. While studying the different zones of a candle flame, Lalita introduced a clean glass slide into the luminous (yellow) zone of a steady candle flame. She observed that_____

- (a) the slide became very hot and broke
- (b) coloured spots appeared on the slide
- (c) a circular black ring was formed on the glass slide
- (d) wax vapours solidified on the glass slide.

Q11. Four students A, B, C and D observed a section of the onion peel under the microscope and made the following sketches :



A



B



C



D

Who made the correct sketch of the onion peel?

- (a) A
- (b) B
- (c) C
- (d) D

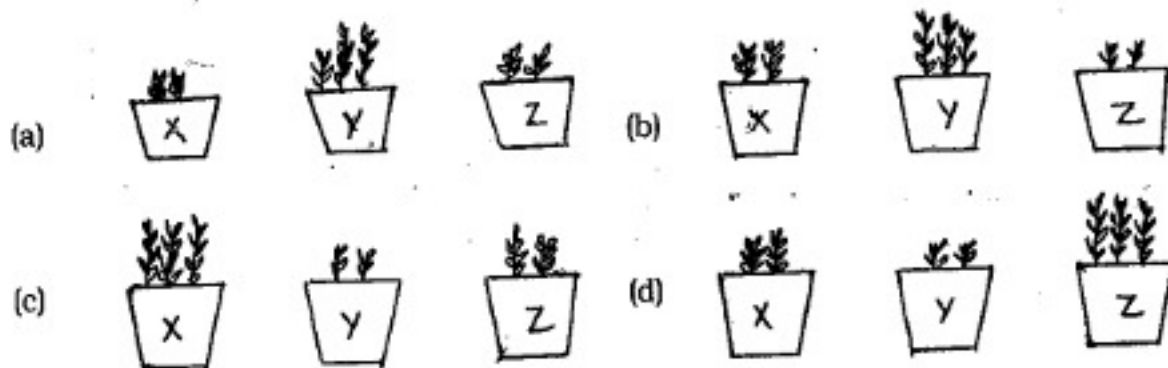
Q12. A student grew gram seedlings in three pots X, Y and Z using the following things :

Pot 'X' - soil and manure

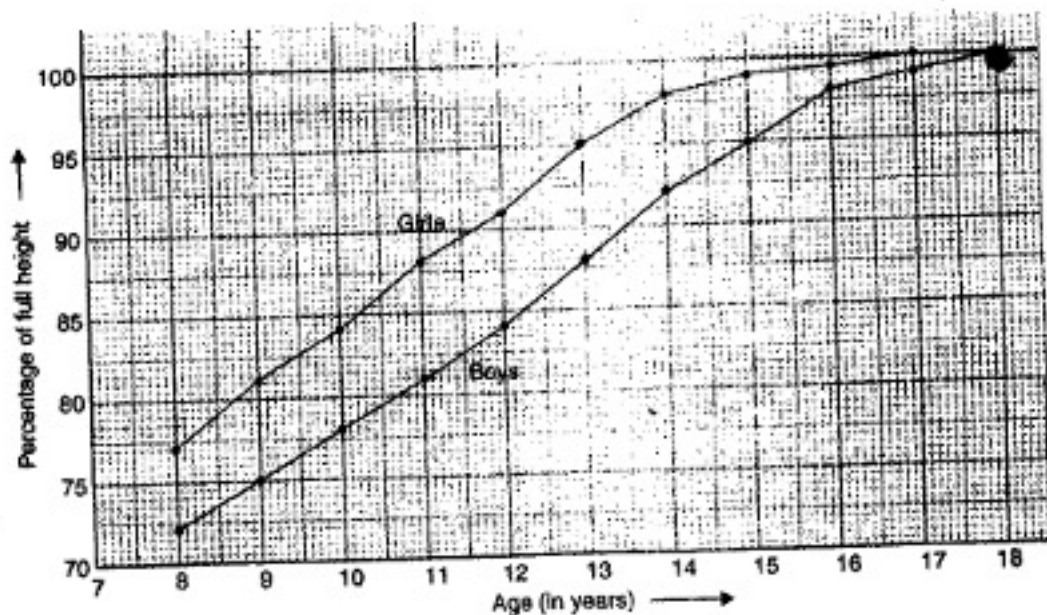
Pot 'Y' - soil and NPK fertiliser

Pot 'Z' - only soil

He kept the pots for a few days in sunlight and watered them regularly. Observe the growth of seedlings and choose the figures which completely justify the use of these things.



Q13. Study the graph showing percentage of height with age in boys and girls.



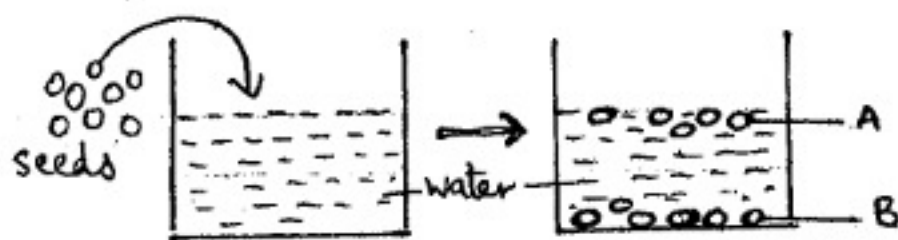
The graph shows that _____

- (a) initially girls grow faster than boys
- (b) both girls and boys reach their maximum height by about 15 years.
- (c) initially boys grow faster than girls
- (d) both (a) and (b)

Q14. Sneha is a girl of 13 years and is 152 cm tall. At the end of the growth period her height is likely to be _____. (refer graph in Q13 for % of full height in girls)

- (a) 171 cm
- (b) 200 cm
- (c) 160 cm
- (d) 184 cm

Q15. To select healthy seeds for sowing Ramkishore performed the following activity :



He concluded that _____

- (a) seeds A are healthy and B are infected.
- (b) seeds B are healthy and A are infected.
- (c) both seeds A and seeds B are healthy.
- (d) both seeds A and seeds B are infected.

Time : 3 Hrs.

M.M.: 80

General Instructions :

- (i) *Read all the questions very carefully.*
- (ii) *Number the answers as given in the question paper.*
- (iii) *Write in a neat and clear handwriting.*
- (iv) *Write the answers in complete sentences.*

Section-A (Compréhension Écrite)

A1. Lisez et répondez :

La France, C'est la mode. La France est connue pour sa mode. Il ya plusieurs couturiers français connus dans le monde entier comme Chanel, Pierre Cardin, Dior etc. Les Français sont très particuliers à propos des vêtements. Les femmes s'habillent dans les robes ou les jupes avec la blouse. Elles aiment porter des bottes. En hiver, elles portent souvent un manteau long avec des jupes et des bottes. Les hommes portent des pantalons et des chemises. Le week-end, ils s'habillent dans le jean ou une culotte et le tee-shirt. Les Français aiment bien s'habiller et leurs vêtements sont toujours à la mode.

A1.1 Dites Vrai ou Faux : (4)

- 1. Chanel est un couturier français.
- 2. Les femmes ne portent pas de bottes.
- 3. Le week-end, les hommes préfèrent porter une culotte.
- 4. La mode n'est pas importante pour les Français.

A1.2 Trouvez dans le texte : (2)

- 1. deux verbes en -er.
- 2. deux noms de vêtements d'hommes.

A1.3 Complétez avec un mot du texte : (2)

- 1. Je vais _____ à l'école. (toujours/particulier)
- 2. Le _____, nous allons au cinéma. (France/week-end)

A2. Lisez et répondez :

Alina : Salut!

Becky : Tu as l'invitation de Paul?

Alina : Oui, et toi?

Becky : Oui, tu vas à la soirée?

Alina : Bien sûr, j'attends la soirée. Tu ne viens pas?

Becky : Si, je viens à la soirée.

Alina : Que vas-tu porter?

Becky : J'ai une belle robe noire. Je vais porter la robe noire. Et toi?

Alina : Je vais acheter une jupe et une blouse pour la soirée. Je vais au magasin. Tu viens avec moi?

Becky : D'accord.

A2.1 Dites Vrai ou Faux :

(4)

1. Alina ne va pas à la soirée.
2. Il y a une soirée chez Becky.
3. Becky va porter une robe.
4. Alina va acheter une robe.

A2.2 Trouvez dans le texte le contraire de :

(1)

1. viens ≠ _____
2. blanche ≠ _____

A2.3 Complétez avec un mot du texte :

(2)

1. Je prends cette _____ bleue. (soirée/jupe)
2. La _____ commence à 9h du soir. (magasin/soirée)
3. _____, nous allons au cinéma. (soirée/D'accord)
4. _____ mes amis! (Salut/Bien sûr)

Section-B (Expression Écrite)

B1. Écrivez et dessinez les ustensiles et les ingrédients d'une recette française <<les crêpes>>. (5)

B2. Quels sont vos projets pour l'année prochaine? Quelles sont vos résolutions? Écrivez en utilisant le futur en 8-10 phrases. (5)

- B3. Vous invitez votre ami(e) pour votre anniversaire. Rédigez cette invitation. (30 mots) (5)
- B4. Votre ami(e) vous propose d'aller au cinéma. Vous ne pouvez pas. Rédigez un message de refus. (20-30 mots) (5)

Section-C (Grammaire)

- C1. Mettez les verbes suivants au futur simple : (5)
1. Vous _____ le musée demain. (visiter)
 2. Tu _____ une soirée. (organiser)
 3. Elles _____ aux examens. (réussir)
 4. Ma soeur _____ son travail. (finir)
 5. Il _____ le métro. (prendre)
- C2. Mettez les phrases suivantes au passé composé : (5)
1. Il _____ directeur. (devenir)
 2. Nous _____ au cinéma hier. (aller)
 3. Vous _____ du Japon. (rentrer)
 4. Caroline _____ dans la rue. (tomber)
 5. Elle _____ en 1975. (mourir)
- C3. Conjuguez au passé composé : (3)
1. Nous _____ à 6h du matin. (se réveiller)
 2. Tu _____ avec de l'eau froide. (se laver)
 3. Il _____ ice. (s'arrêter)
- C4. Cochez la bonne réponse : (3)
1. J' _____ un colis demain
(a) enverrai (b) enverras
(c) enverrai
 2. Vous _____ Paris la semaine prochaine
(a) visiterons (b) visiterez
(c) visiteront
 3. Elle _____ tard
(a) s'est habillée (b) s'est habillé
(c) se est habillée

(3)

C5. Corrigez les fautes : (3)

1. Elles se sont lavés tôt.
2. Tu parlera avec ton ami.
3. Ils ont regardés la télé.

C6. Conjuguez le verbe 'AIMER' au futur simple. (3)

C7. Chassez l'intrus : (2)

1. aller / parler / regarder / aimer
2. venir / passer / descendre / monter

C8. Retrouvez les phrases : (2)

1. irai / J' / à la / demain / banque
2. sommes / nous / allés / cinéma / au

C9. Trouvez le contraire : (2)

1. quelqu'un ≠ _____ (personne, rien, jamais)
2. aller ≠ _____ (venir, descendre, sortir)

C10. Répondez négativement aux questions suivantes : (2)

1. Est-elle allée quelque part?
2. Ils ont lu quelque chose?

Section-D (La culture et la civilisation)

D1. Dites 'Vrai' ou 'Faux' : (5)

1. La France est très connue pour le vin et le fromage.
2. Tous les Français prennent le goûter.
3. Dans un repas organisé, on prend des entrées.
4. Les Français boivent de la bière aux repas.
5. Après le cours, Manuel est allé à la cantine avec Caroline.

D2. Répondez : (5)

1. Où et quand est le mariage?
2. Qu'est-ce que Manuel a fait après le dîner?
3. Est-ce que M. Kumar a en une promotion?
4. Pourquoi Manuel est triste?
5. Qu'est-ce que Neha apprendra à Marseille?

D3. Cochez la bonne réponse :

(5)

1. La famille partira :
(a) La semaine prochaine
(b) avant Noël (c) après Noël
2. À Marseille
(a) il fera chaud (b) il fera beau
(c) il fera froid
3. <<Passer le brevet>> veut dire :
(a) réussira l'examen du brevet
(b) échouera à l'examen du brevet.
(c) écrira l'examen du brevet.
4. Un repas familial :
(a) goûter (b) déjeuner
(c) dîner
5. _____ de Louvre se trouve à Paris.
(a) le palais (b) le musée
(c) le château

अवधि: - होरात्रयम्

निर्देशाः - (1) अस्मिन् प्रश्नपत्रे चत्वारः खण्डाः सन्ति।

(2) प्रतिखण्ड-उत्तराणि पृथक् प्रदत्तायाम् उत्तरपुस्तिकायां लेखनीयानि।

(3) प्रत्येकं खण्डं अधिकृत्य उत्तराणि एकस्मिन् स्थाने क्रमेण लेखनीयानि।

(4) प्रश्नपत्रे उत्तराणि न लेखनीयानि।

(5) प्रश्नसंख्या प्रश्नपत्रानुसारं अवश्यमेव लेखनीया।

(6) सर्वेषां प्रश्नानां उत्तराणि संस्कृतेन लेखनीयानि।

खण्डः - 'क' (अपठित-अवबोधनम्)

अङ्काः 10

प्र1. अधोलिखितम् अनुच्छेदं पठित्वा प्रदत्तप्रश्नानां उत्तराणि लिखत -

दक्षिणभारते सागरमध्ये एकं लघुद्वीपं वर्तते। तस्मिन् द्वीपे सागरतटैः क्षाल्यमानं प्राचीनं नगरं कन्याकुमारी इति अस्ति। एषा कन्याकुमारी त्रयाणां सागराणां संगमस्थली। सागरजले प्रतिबिम्बितं सूर्योदयस्य दृश्यम् अद्भुतम् एव। सूर्यस्य क्रमशः अरुणा पीता धवला शोभा दर्शकान् मन्त्रमुग्धान् करोति। सागरस्य लहरीभिः क्षिप्तानां चित्र-विचित्र-वर्णानां शुक्तीनां वृष्टिः इव भवति। जलधितटे स्थितैः नारिकेल-कदली-पादपैः परिवृत्ता इव एषा नगरी। एकदा स्वामि-विवेकानन्दः सागरतटे स्थितायां एकस्यां बृहद्-शिलायाम् उपविष्टः त्रीणि दिनानि ध्यानमग्नः जातः। एतस्याम् शिलायाम् एव अधुना विवेकानन्दकेन्द्रं विकसितम् अस्ति। अत्र आगत्य साधकाः ध्यानं साधनां च कृत्वा जीवनं सफलं कुर्वन्ति।

I. एकपदेन उत्तरत -

(4x½=2)

(i) सागरजले प्रतिबिम्बितं कस्य दृश्यम् अद्भुतम् अस्ति?

(ii) कन्याकुमारी नाम नगरं कैः क्षाल्यते?

(iii) दक्षिणभारते कुत्र एकं लघुद्वीपं वर्तते?

(iv) कन्याकुमारी कति सागराणाम् संगमस्थली अस्ति?

II. पूर्णवाक्येन उत्तरत -

(2x2=4)

(i) अत्र आगत्य साधकाः किं कुर्वन्ति?

(ii) कन्याकुमारी कीदृशैः पादपैः परिवृत्ता अस्ति?

III. यथानिर्देशं उत्तरत -

(4x½=2)

(i) 'धवला शोभा' अनयोः पदयोः विशेषणपदं किम्?

(ii) 'कुर्वन्ति' क्रियापदस्य कर्तृपदम् किं?

(iii) 'सागर' अस्य पदस्य किम् पर्यायपदम् अत्र प्रयुक्तम्?

(iv) 'गत्वा' अस्य पदस्य किम् विलोमपदम् अत्र प्रयुक्तम्?

IV. अस्य गद्यांशस्य उचितं शीर्षकं लिखत।

(2)

(C-1)

- प्र2. छात्रावास-जीवनस्य विषये पितरं प्रति लिखितं पत्रं मञ्जूषायां प्रदत्तैः उचितपदैः पूरयित्वा उत्तरपुस्तिकायां पुनः लिखत - (10x½=5)

मञ्जूषा
वृक्षाः, छात्रावासात्, पुत्रः, स्थानं, वातावरणं,
भोजनालयः, पितृमहोदय, प्रकाशस्य, क्रीडाकक्षः, सर्वेभ्यः

(1) _____

तिथिः _____

पूज्य (2) _____

सादरं नमामि ।

अत्र कुशलं तत्रास्तु । ह्यः मया अध्यापकमहोदयानां निर्देशेन स्वावासकक्षं लब्धम् । कक्षे वायोः (3) _____ च आगमनाय वातायनानि सन्ति । कक्षं परितः अनेके (4) _____ सन्ति । अत्र एकः (5) _____ अस्ति यत्र ग्रादिष्टं भोजनं प्राप्यते । भोजनालयेन सह एकं सार्वजनिकं (6) _____ अस्ति । यत्र वाचनालयः संगणक-कक्षः (7) _____ च विराजन्ते । छात्रावासे छात्राः मध्यरात्रिं यावत् पठन्ति अतः अध्ययनस्य अपि (8) _____ महा लाभकरं भविष्यति । स्वगृहे (9) _____ मम नमोनमः ।

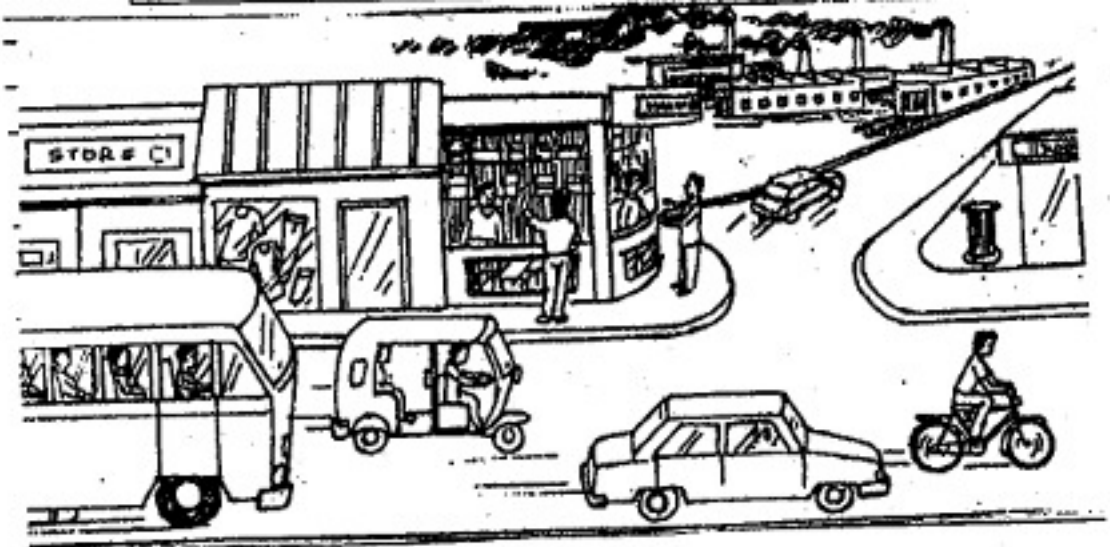
भवतः (10) _____

क. ख. ग.

- प्र3. मञ्जूषायां प्रदत्तशब्दानां सहायतया चित्रं दृष्ट्वा पञ्चवाक्यानि संस्कृतेन लिखत ।

(10)

मञ्जूषा
नगरस्य, वाहनानि, आपणकः, कारयानम्, द्विचक्रिकायां, नरः
वैस्तुनि, उद्योगेभ्यः, राजमार्गे, निस्सरति, धूमः, धसयाने



- प्र4. अधोलिखितवाक्येषु रेखांकितपदानां सन्धिच्छेदं सन्धिं वा कृत्वा पुनः पूर्णवाक्यं लिखत - (3x1=3)
- प्रति+एकम् कार्यम् ध्यानेन कुरु।
 - आकाशे चन्द्रोदयः भवति।
 - मम नाम सुरेन्द्रः अस्ति।
- प्र5. निम्न-उपसर्गान् धातून् च संयोज्य विभज्य वा लिखत - (3x1=3)
- शिशुः मातरम् अनु+गम्।
 - सूर्यः अन्धकारं अप+नी।
 - वने मृगाः इतस्ततः वि+चरु।
- प्र6. (क) अधोलिखितवाक्ययोः रेखांकितपदस्य प्रकृति-प्रत्ययौ पृथक्-पृथक् कृत्वा अथवा संयोज्य पुनः वाक्यानि लिखत - (2x1=2)
- लता ईश्वरं नम्+तुमुन् देवालयं गच्छति।
 - अहं कथां श्रोतुम् मन्दिरं गच्छामि।
- (ख) तुमुन् प्रत्ययं संयोज्य वाक्यसंयोजनम् क्रियताम् - (2x1=2)
- वयं प्रतिदिनं भ्रमामः। वयं उद्यानं गच्छामः।
 - छात्रा स्मरति। सा पाठं पठति।
- प्र7. अधोलिखितवाक्येषु अंकाणां स्थाने संख्यावाचक-विशेषणैः रिक्तस्थानानि पूरयित्वा पुनः लिखत : (4x1=4)
- वृक्षे (51)_____ खगाः सन्ति।
 - सुरेशः (60)_____ वर्षीयः अस्ति।
 - सभायां (75)_____ जनाः आसन्।
 - मार्गे (97)_____ वाहनानि सन्ति।
- प्र8. उचितशब्दरूपैः रिक्तस्थानानि पूरयित्वा वाक्यानि पुनः लिखत - (4x1=4)
- _____ चौरान् अदण्डयन्। (राजन्)
 - जनाः _____ तरन्ति। (नदी)
 - _____ पुत्रः मम मित्रम् अस्ति। (राजा/राज्ञः/रासि)
 - _____ लक्ष्मी अस्ति। (इदम्)
- प्र9. उचितधातुरूपैः रिक्तस्थानानि पूरयित्वा वाक्यं पुनः लिखत - (4x1=4)
- ते मम मित्राणि _____। (अस)
 - श्वः पाकशालायां स्त्री सूपं _____। (पच)
 - यूयम् नाटकं _____। (दृश् - लोढ लकारे)
 - ह्यः आवां मयूरम् _____। (दृश्)

प्र10. निम्नवाक्यानि शुद्धं कृत्वा पुनः लिखत -

(3x1=3)

(न)

- (i) यूयं गुरुजनं नमन्ति।
- (ii) एतत् पीतः वस्त्रम् अस्ति।
- (iii) पुरा अनेके नृपाः अत्र वसन्ति।

खण्डः - 'घ' (पठित-अवबोधनम्)

अङ्काः 30

प्र11. अधोलिखितं गद्यांशं पद्यांशं नाट्यांशं च पठित्वा प्रदत्तप्रश्नानां उत्तराणि लिखत -

(क) गद्यांशः

एका शिक्षिका गृहात् पुस्तकानि आदाय चलति। मार्गे कश्चित् तस्याः उपरि धूलिं कश्चित् च प्रस्तरखण्डान् क्षिपति। परं सा स्वदृढनिश्चयात् न विचलति। स्वविद्यालये कन्याभिः सविनोदम् आलपन्ती सा अध्यापने संलग्ना भवति। तस्याः स्वकीयम् अध्ययनमपि सहैव प्रचलति। केयं महिला? अपि यूयमिमां महिलां जानीथ? इयमेव महाराष्ट्रस्य प्रथमा महिला शिक्षिका सावित्री बाई फुले नामधेया।

(2x½=1)

I. एकपदेन उत्तरत -

- (i) सा काभिः सविनोदं वार्तालापं करोति?
- (ii) शिक्षिका गृहात् कानि आदाय चलति?

(2x1=2)

II. पूर्णवाक्येन उत्तरत -

- (i) महाराष्ट्रस्य प्रथमा महिला शिक्षिका का अस्ति?
- (ii) मार्गे कश्चित् तस्याः उपरि किं किं क्षिपति?

(4x½=2)

III. यथानिर्देशम् उत्तरत -

- (i) 'विचलति' क्रियापदस्य कर्तृपदम् किम् अस्ति?
- (ii) 'एका शिक्षिका' अनयोः पदयोः विशेषणपदं किम् अस्ति?
- (iii) 'परकीयम्' अस्य किं विलोमपदम् अत्र प्रयुक्तम्?
- (iv) 'नीत्वा' अस्य किं पर्यायपदम् अत्र प्रयुक्तम्?

(ख) पद्यांशः

शनैर्यदि यामि चिररात्राय विलपिष्यति गृहे बालः।
द्रुतं यदि यामि वसनं मे भवेदार्द्रं सलिलवेगैः ॥

(2x½=1)

I. एकपदेन उत्तरत -

- (i) कः विलपिष्यति?
- (ii) बालः कुत्रास्ति?

(1x2=2)

II. पूर्णवाक्येन उत्तरत -

जलवाहिनी यदि द्रुतं गच्छेत् तर्हि किं स्यात्?

III. यथानिर्देशं उत्तरत -

(4x½=2)

- (i) 'गच्छामि' इत्यर्थे किं पदम् अत्र प्रयुक्तम्?
- (ii) 'द्वुतम्' अस्य किं विलोमपदम् अत्र प्रयुक्तम्?
- (iii) 'वस्त्रम्' अस्य किं पर्यायपदम् अत्र प्रयुक्तम्?
- (iv) 'आर्द्र वसनम्' अनयोः पदयोः विशेषणपदम् किम्?

(ख) नाट्यांशः

(काश्चन बालिकाः भ्रमणाय निर्गताः परस्परमालपन्ति)

रिपञ्ची - परमिन्दर्! परमिन्दर्! एहि आगच्छ, उपवनं प्रविशामः।

परमिन्दर् - अरे! उपवनस्य द्वारे एव प्लास्टिकस्यूतकानि क्षिप्तानि इतस्ततः विकीर्णानि।

कचनार्द्र - जनाः प्रमादं कुर्वन्ति। प्लास्टिकपुटकेषु खाद्यवस्तूनि गृहीत्वा भक्षयन्ति परं तानि पुटकानि मार्गे यत्र कुत्रापि क्षिपन्ति।

रौजालिम् - इयं महती समस्या। अपि प्रविशामः?

रिपञ्ची - अस्तु प्रविशामः।

(सर्वाः उपवने प्रविशन्ति।)

I. एकपदेन उत्तरत -

(2x½=1)

- (i) जनाः मार्गे किं क्षिपन्ति?
- (ii) सर्वाः कुत्र प्रविशन्ति?

II. पूर्णवाक्येन उत्तरत -

(2x1=2)

- (i) जनाः कानि गृहीत्वा भक्षयन्ति?
- (ii) उपवनस्य द्वारे कानि विकीर्णानि?

III. यथानिर्देशं उत्तरत -

(4x½=2)

- (i) 'कुर्वन्ति' क्रियापदस्य कर्तृपदम् किम्?
- (ii) 'तानि पुटकानि' अनयोः पदयोः विशेष्यपदम् किम्?
- (iii) 'गच्छ' अस्य किम् विलोमपदम् अत्र प्रयुक्तम्?
- (iv) 'आलस्यं' अस्य किं पर्यायपदम् अत्र प्रयुक्तम्?

प्र12. अधोलिखितश्लोकस्य अन्वयं उचितपदक्रमेण पूरयित्वा उत्तरपुस्तिकायां पुनः लिखत -

(4x1=4)

तनुः कूपो महालम्बस्तले तस्यास्ति पानीयम्।

कृषन्त्या मे घटं रज्ज्वा करेऽप्यास्ते महास्फोटः ॥

अन्वयः कूपः (1) _____ महालम्बः तस्य (2) _____ पानीयम् अस्ति। (3) _____
रज्ज्वा कृषन्त्या मे करे (4) _____ अपि आस्ते।

प्र13. अधोलिखितकथनेषु रेखांकितपदमाधृत्य प्रश्ननिर्माणं कुरुत -

(4x1=4)

- (i) प्रेमलः काष्ठानि प्रज्ज्वालय अपृच्छत् ।
- (ii) चन्द्रस्य छायापातेन सूर्यग्रहणं दृश्यते ।
- (iii) पृथिवी स्थिरा वर्तते ।
- (iv) एतानि सर्वाणि वस्तूनि प्रायः प्लास्टिकेन निर्मितानि सन्ति ।

प्र14. अधोलिखितवाक्यानि घटनाक्रमानुसारेण पुनः लिखत -

(8x½=4)

- (i) स्नात्वा सः अवदत् - पुष्पमिव शरीरं लघु जातम् ।
- (ii) प्रेमलः हण्डीं चुल्याम् अस्थापयत् ।
- (iii) एकः प्रेमलः आसीत् तस्य भार्या प्रेमली आसीत् ।
- (iv) सः हण्डीं स्नानगृहे अस्थापयत् ।
- (v) प्रेमलः स्नानाय उष्णजलं इच्छति ।
- (vi) प्रेमलः स्नानम् अकरोत् ।
- (vii) प्रेमलः कूपात् घटे जलम् अभरत् ।
- (viii) सः भोजनम् अकरोत् ।

प्र15. अर्थैः सह शब्दानां मेलनं कृत्वा उत्तरपुस्तिकायां पुनः लिखत -

(6x½=3)

शब्दाः	अर्थाः
नापितैः	श्रुत्वा
भृत्वा	नवीनानाम्
कुम्भम्	केशकर्तकैः
निकषा	समीपे
आकर्ण्य	सम्पूर्य
नूतनानाम्	घटम्

Time : 3 Hrs.

M.M.: 80

General Instructions :

1. *Read the questions carefully.*
2. *Number the answers as given in the question paper.*
3. *Write in a neat and clear handwriting.*
4. *Write the answers in complete sentences.*

SECTION-A (READING)

- Q1. Read the passage given below and answer the questions that follow : (8)

Many years ago, Vishnu lived in a small village in the plains of North India. Once he went to meet his friend, Moti who lived in a hilly area. To welcome his friend, Moti ordered a grand feast. The cooks and the ladies of the house spent a busy day cooking various delicacies. At lunch various platters filled with brightly coloured food presented a pretty sight. Vishnu tasted all the dishes served to him. Moti waited eagerly for words of praise. Imagine his disappointment when Vishnu said, "The meal was wonderfully cooked but the feasts served in our village are better." Moti thought that the feasts of the fertile plains must be very elaborate and ordered his cooks to cook dinner on a grander scale. At night, the lavish dinner was served to Vishnu and Moti waited in agonising silence. Vishnu spoke, "Your food is fit for the table of a King but it cannot be compared with the feasts I have at home." Moti nearly dropped down in disappointment. What were the feasts of his friend's village like? The next day Vishnu left and invited Moti to visit his place. After a few months, Moti went to meet Vishnu. Vishnu was delighted to see his friend and ordered for dinner. Moti waited in great expectation but was highly disappointed when he saw a simple meal. A servant brought in rotis, dal, green vegetable, curd, rice and a bowl of salad. Moti gulped down the food and thought that the delicacies of the village would be served to him the next day. But for the next three days, the same simple meal was served to him without much variation. Moti couldn't stay quiet and asked Vishnu, "Your village, I find, has no feast to offer. How can you dispute the superiority of the food served in your region?" Vishnu smiled and replied, "We, the people of this village, are very simple and our tastes and eating habits are also simple. We work hard in fields and prefer to eat simple but nourishing food. The food you served me was too rich to be nourishing. It must have also cost you a great deal. What is the use of such food?" Moti had to acknowledge the strength of his friend's arguments. He returned home a changed man.

- (a) How did the food in the houses of the two friends differ? (2)
- (b) What does 'the dinner on a grander scale' mean? Do you think it was necessary or a waste? Why? (2)
- (c) For what did Moti wait expectantly but in vain? (1)
- (d) How did Vishnu praise the dinner? Did it please Moti? (1)
- (e) How did Moti accept defeat? (1)
- (f) Find words from the passage that mean the same as following - ($2 \times \frac{1}{2} = 1$)
- (i) admit the truth of
- (ii) a large meal marking a special occasion

Q2. On the basis of your reading of the poem, answer the questions that follow : (7)

A snail once to a tortoise said :
 'What is your speed per hour?'
 The tortoise answered, 'Oh! not much,
 I'm but one tortoise power.'
 'But didn't you once beat the quick hare?'
 'Not I', the modest tortoise said,
 'Great grandpa was gone
 And while the hare slept, our old man
 Just kept on, going on.'
 'I see', the snail at length replied
 'I always thought it queer
 D'you think if I tried such a race.
 I need have any fear?'
 The tortoise smiled and shook his head;
 'The times have vastly changed
 Great grandpa had a lot of luck
 Things are now not so arranged,
 That crowds of sporting folks would come,
 And keep the hare awake;
 So what a toil it would be for you,
 What strides you'd have to take!

Besides why should we nowadays
Be proud to beat a hare?
We're most distinguished as we are -
Slow motion is now so rare.

- (a) What do the snail and tortoise have in common? (1)
- (b) How did the tortoise's grandpa win the race? (1)
- (c) How have things changed 'now' that would keep the hare awake? (1)
- (d) What advice did the tortoise give to the snail at the end of the poem? (1)
- (e) The poem teaches us an important lesson. What do we learn from the poem? (1)
- (f) Identify one literary device used in the poem. (1)
- (g) Find antonyms of the given words from the passage : (2x½=1)
 - (i) never
 - (ii) frowned

SECTION-B (WRITING)

- Q3. Write an e-mail to thank your aunt who lives in Pune. She has sent you a birthday present by post which you liked a lot. (5)
- Q4. This month is 'Health Awareness Month' at your school. Make a poster to highlight the dangers of junk food, importance of healthy eating habits and the benefits of exercise. (4)
- Q5. You are Akshit/Akshita, a resident of 46/78, Vijay Nagar, New Delhi. Write a letter to the editor of a newspaper expressing your views about the need to instil moral values in today's youth. (6)

SECTION-C (GRAMMAR)

- Q6. Replace the underlined words with a suitable adverb and rewrite the sentences : (4x½=2)
 - (a) Neha forgot an important file at home because she left her house in a great hurry.
 - (b) The teacher reminded the students again and again to submit the project work on time.
 - (c) My mother shouted at me in anger when I spoiled her expensive saree.
 - (d) All the players shouted at the top of their voice when they won the match.

Q7. Fill in the blanks with the correct degree of the adjectives given in the brackets :
(4x½=2)

- (a) The pen is _____ than the sword. (mighty)
- (b) Solomon was a very _____ King. (wise)
- (c) The Shatabdi Express is the _____ train on this route. (comfortable)
- (d) A wise enemy is _____ than a foolish friend. (good)

Q8. Fill in the blanks with suitable form of verbs given in brackets : (4x½=2)

A miser once _____ (bury) all his money under a tree. He _____ (save) this money over the years. He went to check his treasure everyday. Once a thief _____ (see) him counting his treasure and decided to _____ (steal) it. The next day, the miser found his treasure gone and was very upset.

Q9. Fill in the blanks with suitable articles : (4x½=2)

What _____ shame! You have beaten _____ innocent child.
_____ Child was just asking for _____ loaf of bread.

Q10. Change the given sentences into indirect speech : (2x1=2)

- (a) The host said, "I am really glad to be with you today."
- (b) The examiner said, "Ansh has worked independently."

Q11. Rewrite the given sentences in passive voice : (2x1=2)

- (a) Somebody has switched on the light.
- (b) The students were decorating the display boards.

Q12. Join the given pairs of sentences using suitable conjunctions : (2x1=2)

- (a) The water looks clean. It may not be free from bacteria.
- (b) Global warming must be controlled. All the glaciers will melt.

Q13. Complete the given passage with suitable collective nouns : (4x½=2)

A cruel hunter entered the forest with a _____ of arrows on his back and hid behind a _____ of trees. He saw a _____ of wolves chasing a _____ of sheep.

Q14. In the given sentences, the relative pronouns are not placed correctly. Rewrite the sentences correctly : (2x1=2)

- (a) The child, which was very heavy, could not lift the box.
- (b) The shopkeeper welcomed Mrs. Kapoor, who was a very courteous man.

Q15. Rearrange the words to make complete and correct sentences: (2x1=2)

- (a) progressed/after/India/a/has/lot/independence.
- (b) teacher/annual day/music/composing/patriotic/our/is/a song/for the.

SECTION-D (LITERATURE)

Q16. Read the extracts given below and answer the questions that follow :

(A) "For myself I chose the cheapest dish on the menu and that was a mutton chop." (3x1=3)

- (a) Who does the word 'I' refer to in the above lines?
- (b) With whom did the speaker go for lunch?
- (c) Why did the speaker order the cheapest dish for himself?

(B) "So, flutter flit, be not so proud
Each caterpillar is endowed
With power to make him by and by
A blithe and brilliant butterfly." (3x1=3)

- (a) Who is referred to as 'him' in the above lines?
- (b) Why does he refer to the butterfly as 'flutter flit'?
- (c) What power does 'he' possess?

(C) "Rather! I've been wanting to see what it's like ever since I was a kid." (3x1=3)

- (a) Who is the speaker of the above lines?
- (b) What does the word 'it' refer to in the given lines?
- (c) Why did the speaker want to see it ever since he was a kid?

Q17. Answer the given questions in 30-40 words : (2x2=4)

- (a) Why was the narrator tense while his guest enjoyed a lavish meal at Foyot's in the lesson 'The Luncheon'?
- (b) Why did Mr. Fotheringay go to the park and what did he do there?

Q18. Answer the given questions in brief : (2x2=4)

- (a) 'The Butterfly and the Caterpillar' is an age old fable. What have you learnt from this poem?

- (b) How does the poet in the poem 'If' advise the reader to deal with the dishonest people?

Q19. Answer the given question in 100-150 words : (5)

'Presence of mind is the ability to act quickly in the face of crisis' and John used the same quality to overcome the difficult situation. How did he do so? (Answer with reference to the story 'The Rowland Ruby')

OR

Mr. Fotheringay wanted to use his powers for the betterment of the society but everything went wrong. What happened when he stopped the earth's rotation and how did he bring everything back to normal?

Q20. Answer the following in 30-40 words each : (2x2=4)

- (a) In the story 'Seventeen Oranges' the policeman caught the narrator red handed but had to leave him free at the end. Why?
- (b) What is the significance of weaving different kinds of clothes at different times of the day in the poem 'Indian Weavers'?

Q21. Answer the given question in 80-100 words : (4)

Odysseus proved his intelligence when he escaped from the cave of Polyphemus. How did he manage to do so?

OR

In the lesson 'Seventeen Oranges' the narrator was very fond of oranges but started hating them at the end of the story. What brought this change in him?



**SACHDEVA
GLOBAL SCHOOL**

CLASS - VIII	GENERAL KNOWLEDGE	TERM-II	25-02-2013
---------------------	--------------------------	----------------	-------------------

Name:	M M : 20	Time : 1 Hr
--------------	-----------------	--------------------

Q1. Choose the correct option.

[1 x5 = 5]

a) Who is known as Father of Geometry?

i) Euclid

ii) Herodotus

(ii) Charles Babbage

(iv) P.C. Ray

b) 'Agoraphobia' is the fear of

i) death

iii) germs

ii) light

iv) wide open spaces

c) C. Venkata Raman received Nobel Prize in the category of

i) Peace

iii) Physics

ii) Literature

iv) Medicine

d) Michael Phelps is associated with

i) running

iii) boxing

ii) swimming

iv) shooting

e) It is a world famous Chinese therapy. In this, fine needles are inserted into the patients skin at special points along some assumed lines of energy.

i) Accupuncture

ii) Shiatsu

(ii) Reiki

(iv) Ayurveda

Q2. Identify the person –

[1 x 4 =4]

a) He was British but born in Mumbai, Some of his famous works are 'The Jungle Book', 'Just So Stories', 'Gunga Din and Kim'. He is _____.

b) This Indian led the Chipko Andolan to save trees from being cut down. He also led protests against the Tehri Dam Project. He is _____.

c) She was a successful African American businesswoman. She is listed in the Guinness Book of Records as the first woman to become a millionaire. She is _____.



**SACHDEVA
GLOBAL SCHOOL**

- d) He was a famous Roman general who was offered dictatorship for life. Many statesmen did not like the idea. _____

Q3. Fill in the blanks.

[1 x 4 = 4]

- a) Charles Dicken's famous book named _____ begins with the line " Marley was dead, at least to begin with".
- b) Name the sport in which the passenger basket carries you in the air . _____
- c) _____ is an instrument for detecting electric charge.
- d) Dermatologist is the specialists who specialise in treatment of _____.

Q 4. Write full form of

[1 x 2 = 2]

- (a) MRI _____
- (b) EVM _____

Q5. Answer the following questions (Current affairs)

[1 x 5 = 5]

- (a) Name the Indian banker & business executive who on 15 dec, 2012 took over as president of FICCI becoming the first woman to head the leading industry body _____
- (b) Name the film which was given national tourism award by the ministry of tourism in 2012. _____
- (c) The organisation to which the Nobel peace prize 2012 was awarded at Oslo. _____
- (d) Who is the present railway minister of India ? _____
- (e) Which telecom operator shut its Mumbai operations recently? _____

(खण्ड-क)

प्र1. निम्नलिखित गद्यांश को पढ़कर पूछे गए प्रश्नों के उत्तर दीजिए :

मानव के अच्छे एवं शिष्ट व्यवहार को सद्व्यवहार कहा जाता है। यह मनुष्य की पहचान तो कराता ही है, उसे मान-सम्मान दिलाने, उसकी प्रगति और विकास का मुख्य कारण भी बना करता है। मनुष्य अपने अच्छे व्यवहार से ही देश, समाज व संस्कृति की पहचान बनाता है। अपने अच्छे व्यवहार से मनुष्य परायों को भी अपना बना सकता है। अतः उसे हर हाल में, हर प्रकार से अपना व्यवहार अच्छा बनाना चाहिए। मनुष्य के विचार, उसका व्यवहार ऐसा होना चाहिए कि बुराई अपने आप ही उसके सामने घुटने टेक दे। सद्व्यवहार बनाए रखने के लिए यदि कुछ कष्ट सहना पड़े या त्याग व बलिदान करना पड़े तो उससे भी पीछे नहीं हटना चाहिए। महात्मा गाँधी, नानक देव, गीतम बुद्ध आदि का जीवन इस बात का प्रमाण है कि मनुष्य अपने अच्छे व्यवहार से बड़े से बड़ा लक्ष्य पा सकता है। देश व समाज में परिवर्तन ला सकता है। प्रत्येक धर्म व जाति के शास्त्र, धार्मिक ग्रंथ, साहित्य सद्व्यवहार का गुणगान तो करते ही हैं उसे अपने जीवन में ढालने की प्रेरणा और उपदेश भी देते हैं। यह भी एक तथ्य है कि मनुष्य के सद्व्यवहार से ही उसकी संसार के बाकी प्राणियों में अलग पहचान बनती है। अतः हम सबका यह पावन कर्तव्य है कि हम अपने व्यवहार को अच्छा व संयमपूर्ण बनाएँ। उच्च विचार, अच्छा व्यवहार और नैतिकता ही मनुष्य को श्रेष्ठ प्राणी बनाते हैं।

- (क) सद्व्यवहार से मनुष्य को क्या लाभ हैं? (1)
 (ख) हमारे धार्मिक ग्रंथ व साहित्य हमें क्या सिखाते हैं? (1)
 (ग) मनुष्य अन्य प्राणियों से श्रेष्ठ क्यों कहलाता है? (1)

प्र2. निम्नलिखित काव्यांश के आधार पर प्रश्नों के उत्तर दीजिए :

एक किरण आई, छाई,
 दुनिया में ज्योति निराली,
 रंग गई सुनहरे रंग में,
 पत्ती-पत्ती, डाली-डाली।

(1)

एक किरण आई लाई,
 पूरव में सुखद सबेरा,
 हुई दिशाएँ लाल,
 लाल हो गया धरा का घेरा।
 फूल लगे मुस्काने,
 बही सुगंधित पवन,
 गा रहे भौर मीठे गाने।
 एक किरण बन तुम भी,
 हर लो सारा अँधेरा,
 कर्तव्य ज्योति जला,
 फैला दो दुनिया में उजियारा।

(क) काव्यांश में कवि ने किस समय के प्रकृति चित्रण का वर्णन किया है?

(1)

(ख) किरण का फूलों व भौरों पर क्या प्रभाव पड़ता है?

(1)

(ग) कवि ने हमें क्या संदेश दिया है?

(1)

प्र3. निम्नलिखित विषयों में से किसी एक विषय पर 250 शब्दों में निबंध लिखिए।

(6)

(क) भारत प्यारा, देश हमारा

(ख) मोबाइल सुविधा या असुविधा

(ग) जब मैं दौड़ प्रतियोगिता में प्रथम आया

प्र4. अपने छोटे भाई को प्रतिदिन समाचार-पत्र पढ़ने का महत्त्व बताते हुए पत्र लिखिए।

(4)

अथवा

खाद्य-पदार्थों में बढ़ती मिलावट के लिए उपभोक्ता संघ के अधिकारी को शिकायती पत्र लिखिए।

प्र5. (क) निम्नलिखित वाक्य में कारक-चिह्न रेखांकित कर भेद का नाम लिखिए :

(1)

मनीष परीक्षा के लिए पढ़ रहा है।

(ख) निम्नलिखित शब्द में से उपसर्ग व प्रत्यय अलग करके लिखिए : (1)
 उपनगरीय

(2)

- (ग) निम्नलिखित शब्दों से विशेषण शब्द बनाइए : (1)
इतिहास, गर्व
- प्र6. (क) निम्नलिखित वाक्यों को कोष्ठक में दिए गए काल के अनुसार बदलकर वाक्य पुनः लिखिए :- (2)
(i) महिलाओं ने लोकगीत गाए। (अपूर्ण वर्तमानकाल)
(ii) सौरभ पुस्तक पढ़ेगा। (आसन्न भूतकाल)
- (ख) निम्नलिखित वाक्यों में से क्रिया-विशेषण रेखांकित कर भेद बताइए : (2)
(i) पिताजी परसों जयपुर जाएँगे।
(ii) छात्रों को ध्यानपूर्वक पढ़ना चाहिए।
- (ग) निम्नलिखित वाक्यों में संबंधबोधक शब्द रेखांकित कीजिए : (1)
(i) गाँव के भीतर एक पाठशाला है।
(ii) मोहन मित्रों समेत घूमने गया है।
- (घ) निम्नलिखित रिक्त-स्थानों की पूर्ति समुच्चयबोधक तथा विस्मयादिबोधक शब्दों से कीजिए : (2)
(i) रोटी सब्जी खाओ दाल-चावल?
(ii) खूब पढ़ो।
(iii) आज कितनी सदी है?
(iv) मैंने बाज़ार से पुस्तक खरीदी है पढ़ सकूँ।
- प्र7. (क) निम्नलिखित वाक्यों में उद्देश्य व विधेय अलग कीजिए : (2)
(i) खिलाड़ी मैदान में खेल रहे हैं।
(ii) परिश्रमी राघव मूर्ति बना रहा है।
- (ख) निम्नलिखित वाक्यों को शुद्ध करके पुनः लिखिए : (2)
(i) तेरे का घर मुझे मालूम है।
(ii) मुझे एक फूलों की माला चाहिए।
- प्र8. (क) निम्नलिखित वाक्यांशों के लिए एक शब्द लिखिए : (1)
(i) जिसके आर-पार देखा जा सके।
(ii) जो जहाज़ पानी के अंदर चलता है।
- (ख) निम्नलिखित मुहावरों का वाक्यों में प्रयोग कीजिए : (2)
(i) कमर टूटना (ii) खाक छानना
- (3)

- (ग) निम्नलिखित रिक्त-स्थानों की पूर्ति उचित मुहावरों द्वारा कीजिए : (2)
- (i) सच्चा मित्र हमेशा स्वयं कष्ट झेलता है, परंतु अपने मित्र पर ।
- (ii) मोहन तो अपने माता-पिता के लिए ।

(खण्ड-ख)

प्र9. निम्नलिखित काव्यांशों को पढ़कर नीचे लिखे प्रश्नों के उत्तर दीजिए :

- (क) हम तो केवल यह आँकते हैं
कि एक देश की धरती
दूसरे देश को सुगंध भेजती है।
और वह सौरभ हवा में तैरते हुए
पक्षियों की पाँखों पर तिरता है।
और एक देश का भाप
दूसरे देश में पानी
बनकर गिरता है।
- (i) 'सौरभ हवा में तैरते हुए पक्षियों की पाँखों पर तिरता है' -
भक्ति से कवि का क्या आशय है? (2)
- (ii) प्रकृति देश-देश में भेदभाव नहीं करती है - कैसे? (2)
- (iii) काव्यांश के कवि तथा भाषा का नाम बताइए। (1)
- (ख) माला तो कर में फिरै, जीभि फिरै मुख माँहि।
मनुवाँ तो दहूँ दिसि फिरै, यह तो सुमिरन नाहिं ॥
- (i) कवि के अनुसार ईश्वर की सच्ची भक्ति कैसे की जा सकती है? (2)
- (ii) उपरोक्त साखी की भाषागत विशेषताएँ बताइए। (1)
- (ग) निम्नलिखित प्रश्नों के उत्तर दीजिए :
- (i) श्रीकृष्ण गोपियों के घरों से मक्खन कैसे चुराया करते थे?
कृष्ण द्वारा चोरी करने से गोपियों का क्या नुकसान होता था?
'सूर के पद' - के आधार पर बताइए। (2)
- (ii) लोग अपने सगे-संबंधियों के जल्दी लौटने की प्रतीक्षा क्यों करते हैं? - कविता 'यह सबसे कठिन समय नहीं' के आधार पर बताइए। (1)

प्र10. निम्नलिखित गद्यांशों को पढ़कर नीचे लिखे प्रश्नों के उत्तर दीजिए :

(क) कुछ नौजवानों ने ड्राइवर को पकड़कर मारने-पीटने का हिसाब बनाया। ड्राइवर के चेहरे पर हवाइयाँ उड़ने लगीं। लोगों ने उसे पकड़ लिया। वह बड़े कातर ढंग से मेरी ओर देखने लगा। वह बोला, "हम लोग बस का कोई उपाय कर रहे हैं, बचाइए, ये लोग मारेंगे।" डर तो मेरे मन में था पर उसकी कातर मुद्रा देखकर मैंने यात्रियों को समझाया कि मारना ठीक नहीं है। परंतु यात्री इतने घबरा गए कि मेरी बात सुनने को तैयार नहीं हुए। कहने लगे, "इसकी बातों में मत आइए, घोखा दे रहा है। कंडक्टर को पहले ही डाकुओं के यहाँ भेज दिया है।"

(i) लोग ड्राइवर को मारने के लिए क्यों दौड़े? उन्हें किस बात का डर था? (2)

(ii) ड्राइवर ने लेखक से क्या विनती की? (1)

(ख) वह मन ही मन खुश होता था कि इस गर्जन-तर्जन के होते हुए भी वह सुखी और सुरक्षित है। सबसे अलग, सबसे दूर वह अपनी गुफा का स्वामी है। न किसी से लेना, न किसी से देना। दुनिया की भागदौड़, छीना-झपटी से वह दूर है। साँप के लिए यही सबसे बड़ा सुख था। एक दिन एकाएक आकाश में उड़ता हुआ, खून से लथपथ एक बाज साँप की उस गुफा में आ गिरा। उसकी छाती पर कितने ही जख्मों के निशान थे, पंख खून से सने थे और वह अघमरा-सा जोर-शोर से हौंक रहा था। ज़मीन पर गिरते ही उसने एक दर्द भरी चीख मारी और पंखों को फड़फड़ाता हुआ धरती पर लोटने लगा।

(i) साँप अपनी गुफा में सुरक्षित क्यों महसूस करता था? (2)

(ii) बाज किस हालत में साँप की गुफा में गिरा था? (1)

प्र11. (क) निम्नलिखित प्रश्नों के उत्तर विस्तारपूर्वक दीजिए : (2x3=6)

(i) गवरइया को मनुष्य जैसी टोपी पहनने का शौक था। टोपी बनवाने के लिए वह किस-किस कारीगर के पास गई? उसकी टोपी बनाने के लिए कारीगर क्यों मान गए? 'टोपी' पाठ के आधार पर बताइए।

(ii) दोषों का पर्दाफाश करना कब बुरा रूप ले लेता है? 'क्या निराश हुआ जाए' पाठ के आधार पर बताइए।

(ख) निम्नलिखित प्रश्नों के उत्तर संक्षेप में लिखिए : (3x2=6)

- (i) पाठ 'बाज और साँप' के आधार पर बताइए कि बाज को अपने जीवन से कोई शिकायत क्यों नहीं थी?
- (ii) दर्जी ने गवरइया की टोपी को अधिक सुंदर कैसे बनाया और क्यों? पाठ 'टोपी' के आधार पर बताइए।
- (iii) भ्रष्टाचार के विरुद्ध आक्रोश प्रकट करना किस बात को साबित करता है? पाठ 'क्या निराश हुआ जाए' के आधार पर बताइए।

(ग) दिए गए शब्दों के अर्थ लिखिए : (2)

प्रतिष्ठा, ओझल, कारिंदे, आक्रोश

(घ) दिए गए शब्दों का वाक्यों में प्रयोग कीजिए : (2)

भयानक, संदेह

प्र12. (क) निम्नलिखित प्रश्नों के उत्तर विस्तारपूर्वक दीजिए : (3x3=9)

- (i) संजू और गौरव मामाजी का सामान व वेशभूषा देखकर हैरान क्यों हो गए? कहानी 'बहुरूपियेपन की सनक' के आधार पर बताइए।
- (ii) मामाजी के लिए गुड़िया आफत की पुड़िया कैसे बन गई? कहानी 'मूँछ बढ़ा के' के आधार पर बताइए।
- (iii) पारों ने चोरों को कैसे पकड़वाया? 'उलटे गियर में' कहानी के आधार पर बताइए।

(ख) निम्नलिखित प्रश्नों के उत्तर अति संक्षिप्त रूप में लिखिए : (3x1=3)

- (i) हुकुमसिंह हवलदार कौन था?
- (ii) मामाजी संजू को मनाने के लिए किस-किस नाम से पुकारते थे?
- (iii) पहलवान ने मामाजी को क्या हिदायत दी?